

Series 77 HR

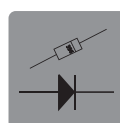
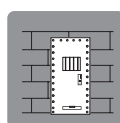
High resistance electric lock

The 77 Series, in its version of high resistance, is characterized by its robustness and suitability for heavy and high security doors.

- Fracture resistance up to 1,300 Kg
- Integrated diode



HI-TECH



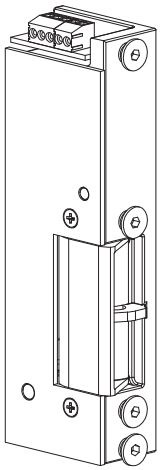
Technical Features

Height	134 mm			
Width	39 mm			
Depth	23,2 mm			
Adjustable Jaw Range	2 mm			
Suits Latches With Maximum Throw Of	10 mm			
Endurance Cycles Test In-plant	500.000			
Holding Force	12.700 N / 1.300 kg-f			
Operating Temperature Range	-15 °C to +40 °C			
Diode Or Varistor	Optional			
Microswitch	Optional			
		12 V		24 VAC
Rated Resistance (Ω)	8	30	70	70
AC Current Consumption (mA)	1200	320	140	
Stabilized DC Current Consumption (mA)		400		350

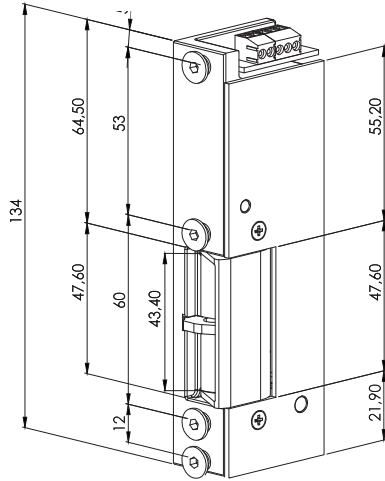
Casing

Recommended striking plate

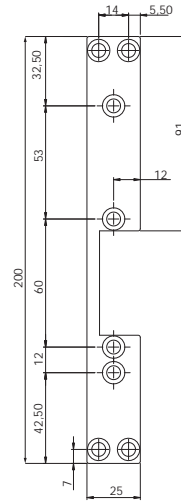
Left
(Din Right)



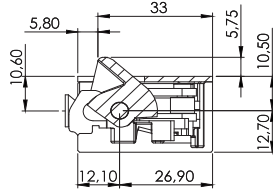
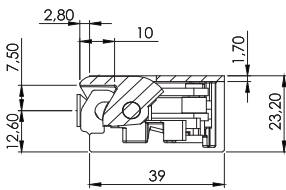
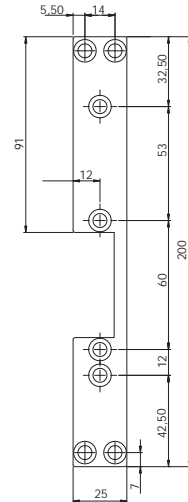
Right
(Din Left)



SX77 Right
(Din Left)



SX77 Left
(Din Right)



Stainless steel

	NORMAL	STANDARD AUTOMATIC	INVISIBLE AUTOMATIC	TIMED AUTOMATIC	SLIDING AUTOMATIC	INVERTED	SWITCHED	UNBLOCKING	ADJUSTABLE *	WORKING VOLTAGE
7707R	✓								✓	12V DC
7707L	✓								✓	12V DC
7733R	✓						✓		✓	12V DC
7733L	✓						✓		✓	12V DC

* By regulating screws in latch

ZKTeco Europe.

Av. Camino de lo Cortao, 10. Nave 1.
28703 San Sebastián de los Reyes. Madrid. SPAIN
Tel: +34 916 532 891 E-mail: sales@zkteco.eu
www.zkteco.eu

© Copyright 2015. ZKTeco Inc. ZKTeco Logo is a registered trademark of ZKTeco or a related company. All other product and company names mentioned are used for identification purposes only and may be the trademarks of their respective owners. All specifications are subject to change without notice. All rights reserved.

