

# 82/82P Series

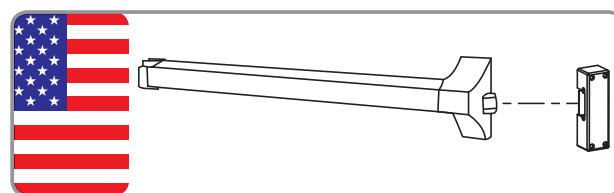
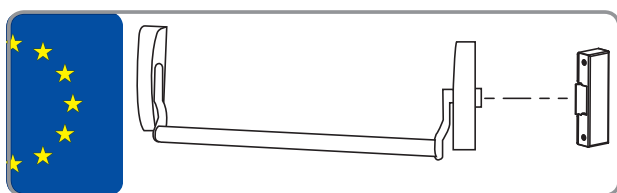
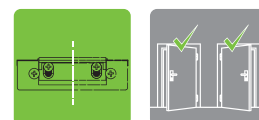
## Anti-Panic electric lock



The 82 Series consists of reversible surface locks, with concealed fixing, concave cover latch and is adaptable to a panic lock latch. They come with eight 1 millimeter thick cover supplements that allow installation with virtually all types of panic locks.

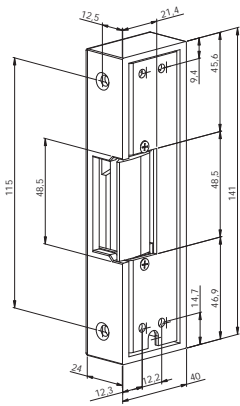
The 82P variant is particularly suitable for American type panic bars. It comes standard with a latch for a perfect fit with the bar. Optionally, it can be ordered with a projector compatible with panic locks that include a counter latch (security lock system which prevents opening of the lock.)

- For panic latch bar
- Reversible
- For American standards ( 82P )
- For European standards ( 82 )
- Available in reinforced version

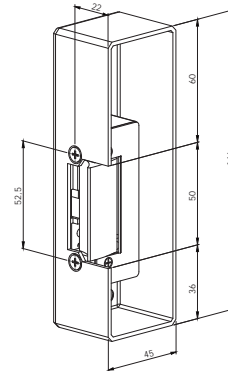
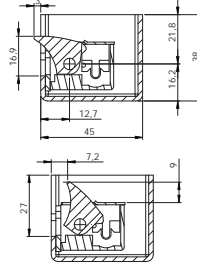
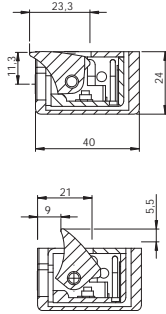
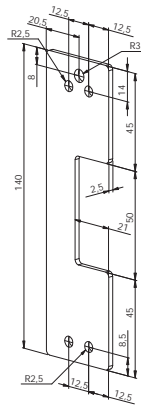


		8-12 V		24 V	12 VDC (412)	24 VDC (424)	12 VDC (512)	24 VDC (524)
Rated Resistance ( $\Omega$ )	8	17	30	58	68	132	70	230
AC Current Consumption (mA)	800 (8V)	370 (8V)		330				
	1200 (12V)	560 (12V)						
Stabilized DC Current Consumption (mA)	1000 (8V)	470 (8V)	260 (8V)		180 vdc	180 vdc	150 vdc	120 vdc
	1500 (12V)	700 (12V)	400 (12V)		cont. rated	cont. rated	cont. rated	cont. rated
Continuously Operating Voltage Range In VDC (V)			-	-	11-12	23-24	11-12	23-24
Max. Latch Preload AC (N)	Series 82 100 (12V)	-	-	-	-	-	-	-
	Series 82P 100 (12V)	-	-	-	-	-	-	-

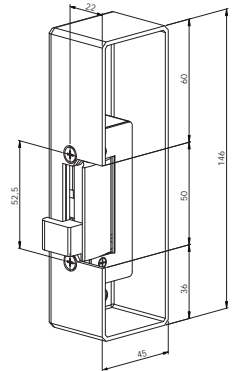
# Casing



82



82P



Black painted finish  
 Chrome

## Technical Features

	Serie 82	Serie 82P
Height	140 mm	146 mm
Width	26,5 mm	<b>38 mm</b>
Depth	40 mm	45 mm
Adjustable Jaw Range	-	
Suits Latches With Maximum Throw Of	10,4 mm	<b>10,11 mm</b>
Endurance Cycles Test In-plant	300.000	
Holding Force	2.950 N / 330 kg-f (Reinforced version 5.900 N / 600 kg-f)	
Operating Temperature Range	-15 °C to +40 °C	
Diode Or Varistor	Optional	
Microswitch	Optional	-

	NORMAL	STANDARD AUTOMATIC	INVISIBLE AUTOMATIC	TIMED AUTOMATIC	SLIDING AUTOMATIC	INVERTED	SWITCHED	UNBLOCKING	ADJUSTABLE *	WORKING VOLTAGE
8215	✓									V AC
8221	✓									12V DC
8227					✓					12V DC
8233					✓		✓			12V DC
8215P	✓									V AC
8221P	✓									12V DC
8227P					✓					12V DC
8233P					✓		✓			12V DC

\* By regulating screws in latch